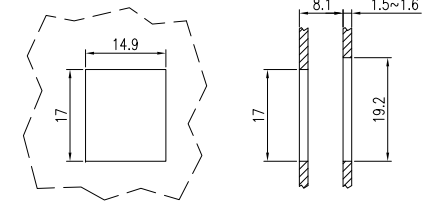
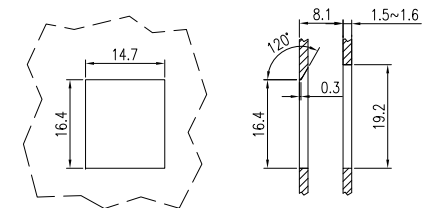


SUGGESTED CUTOUT: FLUSH-MOUNT APPLICATION

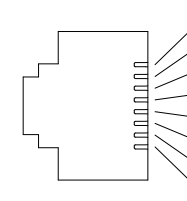
METAL



PLASTIC



PIN ASSIGNMENTS



	T568B	T568A
1	WHITE/ORANGE	WHITE/GREEN
2	ORANGE	GREEN
3	WHITE/GREEN	WHITE/ORANGE
4	BLUE	BLUE
5	WHITE/BLUE	WHITE/BLUE
6	GREEN	ORANGE
7	WHITE/BROWN	WHITE/BROWN
8	BROWN	BROWN

MATERIAL

Housing: High-impact Acrylonitrile Butadiene Styrene (ABS resin), UL 94 V-0 rated
 Jack Contacts: 5100W spring temper phosphor bronze round wire, $\varnothing=0.45$ mm (0.018 in), plated with 1.27 μ m (50 μ in) thick hard gold over 2.54 μ m (100 μ in) thick nickel underplate
 PCB: FR4, UL 94 V-0 rated
 IDC Terminals: C5191R-H phosphorous bronze, t=0.4 mm (0.016 in), plated with 5.08 μ m (200 μ in) thick tin over 1.27 μ m (50 μ in) thick nickel underplate
 IDC Block: High-impact Polycarbonate (PC resin), UL 94 V-0 rated
 RoHS compliant

WIRE RANGE

Conductor Diameters: 0.51 mm (0.020 in)
 24 AWG - 0.64 mm (0.025 in) 22 AWG
 Insulation Diameters: 0.8 mm (0.032 in) - 1.0 mm (0.039 in)
 Cable Diameters: 5 mm (0.197 in) - 9 mm (0.354 in)

P / N	COLOR
HCIFP-60	WHITE
HCIFP-60BK	BLACK

DRAWN BY Ethan Wu	
APPROVED BY Jerry Su	
DIMENSIONS ARE MM [IN]	
TOLERANCES:	
~20	~50
~150	150~
~0.2	~0.4
~0.5	~1.5
ANGLE	2°
3rd Angle Projection	

CC	
TITLE CONNECTORS	
DWG. NO. HCIFP-60 & HCIFP-60BK	REV. 1
CUSTOMER PARTS NO.	
DATE 2012.02.01	SCALE X
SHEET 1/1	