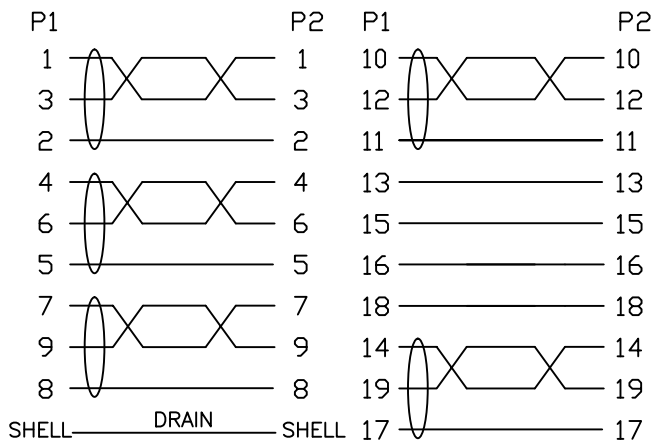


Item NO.	L/(MM)	T/(MM)
32-3765	5000	80

ELECTRONIC TEST:

- 1.OPEN/SHORT/INTERMITTENCE: 100%.
- 2.HI-POT: AC 150V 0.01S
- 3.INSULATION RESISTANCE:DC300V 0.01S 5MΩ(MIN)
- 4.CONDUCTIVE RESISTANCE:5 Ω (MAX)
- 5.Support:8K*4K@30Hz 4:4:4
Support:8K*4K@60Hz DSC
- 6.Printing:ULTRA HIGH SPEED HDMI™ CABLE E***** Ⅹ AWM STYLE 20276 80℃ 30V VW-1



NO.	MATERIAL	DESCRIPTION	QTY.	UNIT
⑦	COPPER FOIL	60mm*5mm*35u	2	PCS
⑥	DUST COVER	COLOR:TRANSPARENT	2	PCS
⑤	MOLDED	45P BLACK PVC		G
④	MOLDED	LD-PE		G
③	ALUMINUM CASE	HDMI A Male BLACK ALUMINUM CASE L28*W20.4*H9.4MM	2	PCS
②	CONNECTOR	HDMI A Male The Pin GOLD PLATED,BLACK INSULATION, GOLD PLATED SHELL.	2	PCS
①	CABLE	(1/0.32BC*1P+1/0.254BC+AL)*5+1/0.32BC*4C+A+D(1/0.254TC)+B(160/0.12AL-MG) BLACK PVC OD:6.5±0.2MM	L	MM

Ltemref	Quantity	Title/Name,designation,material,dimension etc	Article No./Reference		
Designed by ACHY	Checked by HELEN	Approved by - date 31-03-2020	File name	Date 31-03-2020	Scale FREE
ANGLE:			HDMI2.1 cable A-A,28AWG BC,black,Aluminum shell		
UNIT:MM				Edition 1	Sheet 1/1