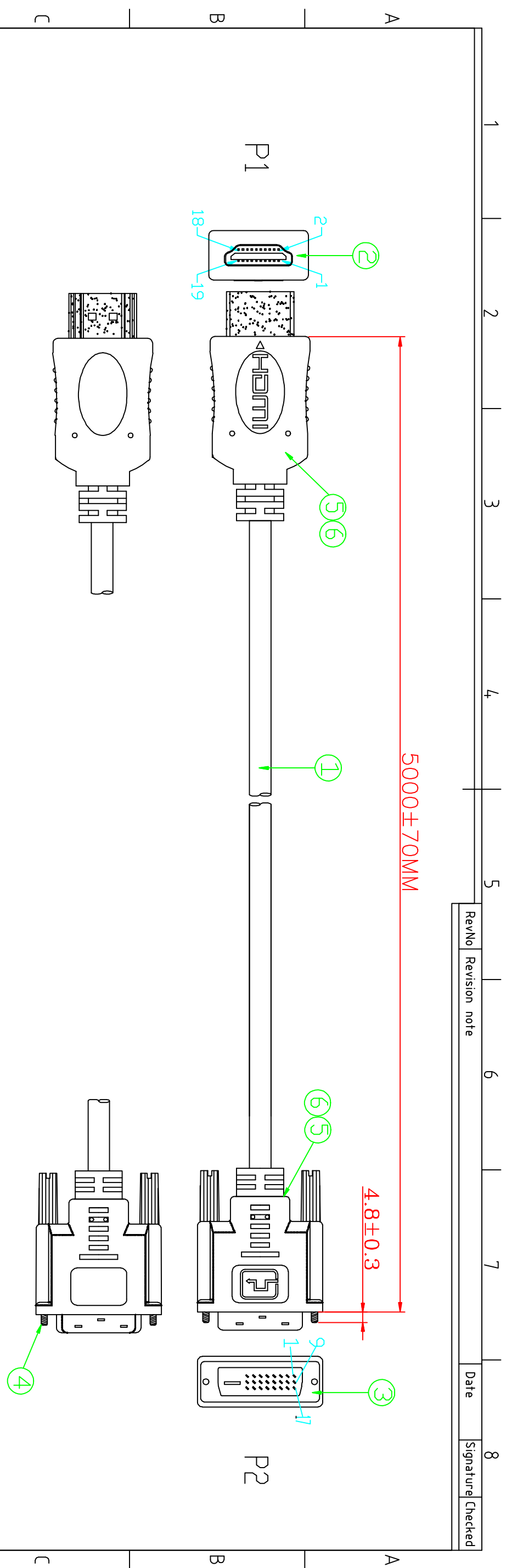
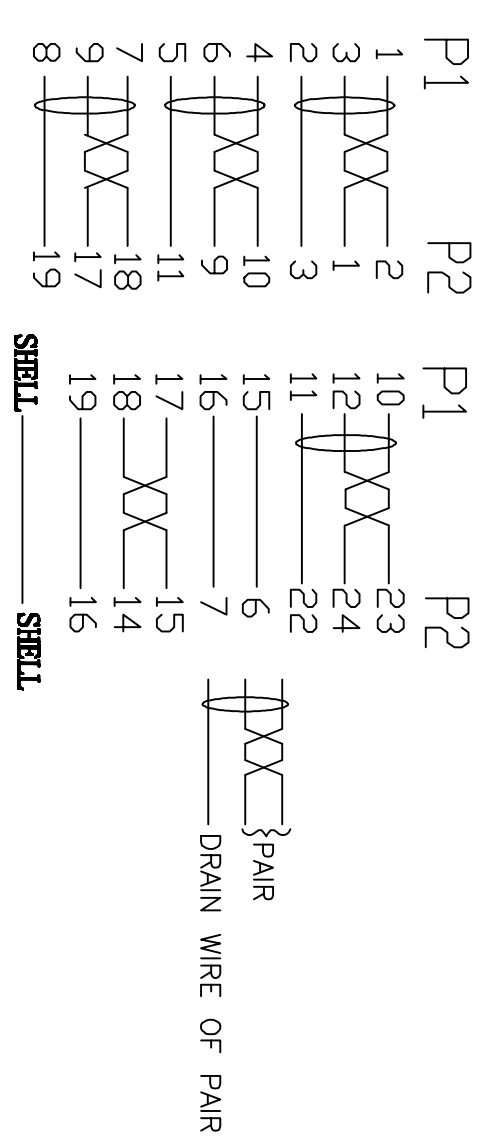


RevNo	Revision note	Date	Signature	Checked



PIN OUT



REQUIREMENTS:

1:100% short,open and miss wire test.  
 2:Insulation resistance:DC300V 10MΩ(Min)  
 Conduction resistance 5Ω(Max)

⑥	OUTER MOLDED	BLACK 45P PVC	0.048	KG
⑤	INTER MOLDED	LDPE	0.021	KG
④	SCREW	#4-40UNC 2.3*45.5MM, BLACK PVC	2	PCS
③	CONNECTOR	DVI 24+1 /MALE, BLACK INSULATOR, GOLD PLATED SHELL, GOLD PLATED PIN	1	PCS
②	CONNECTOR	HDMI A TYPE/MALE, BLACK INSULATOR, GOLD PLATED SHELL, GOLD PLATED PIN	1	PCS
①	CABLE	(1P*30#+FME+D+AL+MYLAR)*4C+1P*30#+3C*30#+ADB JACKET: BLACK PVC OD:6.0±0.15MM	5000	MM
NO.	MATERIAL	DESCRIPTIONG	QTY.	UNIT

Itemref	Quantity	Title/Name, designation, material, dimension etc			Article No./Reference
Designed by	HELEN	Checked by	MARCH 6 2012	Approved by - date	File name
ACHY					L=5M
ANGLE:		DVI 24+1/M TO HDMI AM			32 3753
UNIT:MM					Edition 1
					Sheet 1/1