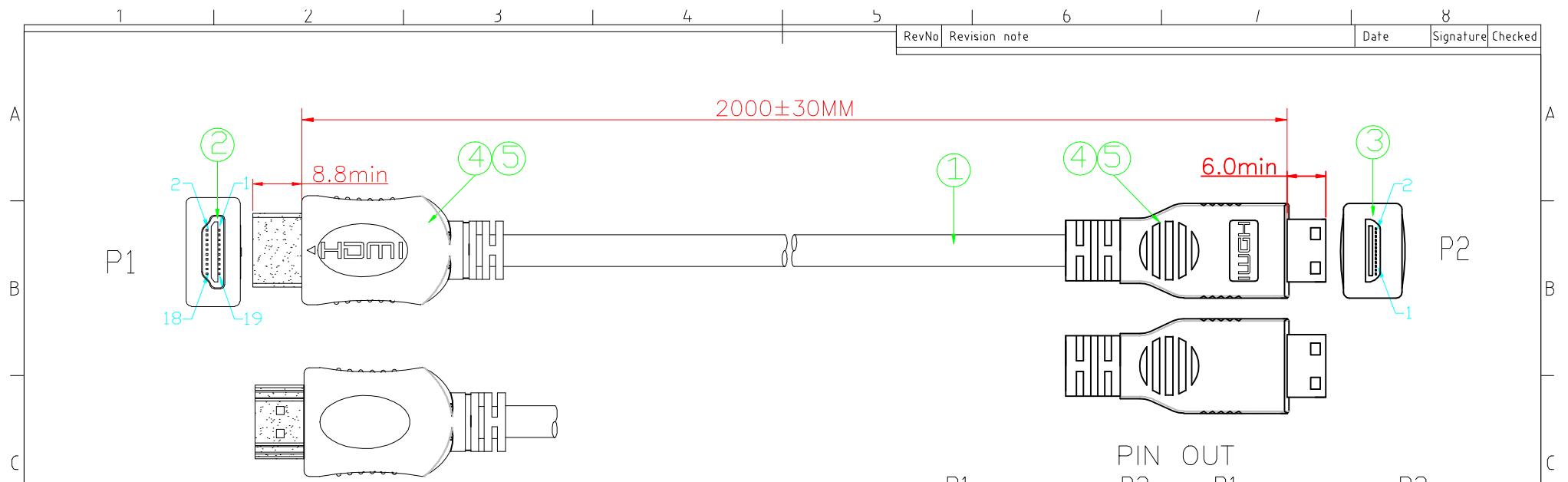
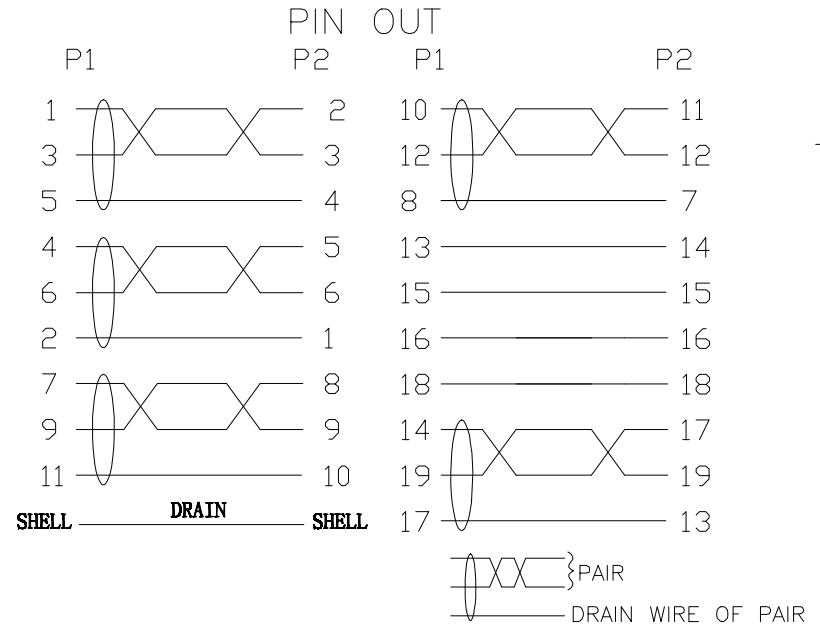


RevNo	Revision note	Date	Signature	Checked
-------	---------------	------	-----------	---------



NOTES:

- 1:100% short,open and miss wire test.
HD-TV:4K*2K 30HZ
- 2:Cable marking:High Speed HDMI® Cable with Ethernet
- 3:ROHS Compliant



④	OUTER MOULDED	BLACK 45P PVC	0.038	KG
③	INNER MOULDED	LDPE	0.021	KG
②	CONNECTOR	HDMI C TYPE MALE,BLACK INSULATOR,GOLD PLATED SHELL,GOLD PLATED PIN	1	PCS
②	CONNECTOR	HDMI A TYPE MALE,BLACK INSULATOR,GOLD PLATED SHELL,GOLD PLATED PIN	1	PCS
①	CABLE	(1P*30AWG+D+FAM)*5C+4C*30AWG+AL+D+B,JACKET:BLACK PVC,OD:6.0±0.2MM	2000	MM
NO.	MATERIAL	DESCRIPTION	QTY.	UNIT

Ltemref	Quantity	Title/Name,designation,material,dimension etc			Article No./Reference		
Designed by ACHY	Checked by HELEN	Approved by - date Jun 16.2017	File name HDMI AM-CM	Date Jun 16.2017	Scale FREE		
ANGLE:		2m High Speed HDMI - Mini HDMI, M-M, 4KX2K version,Black					
UNIT:MM		32 3640		Edition 1	Sheet 1/1		