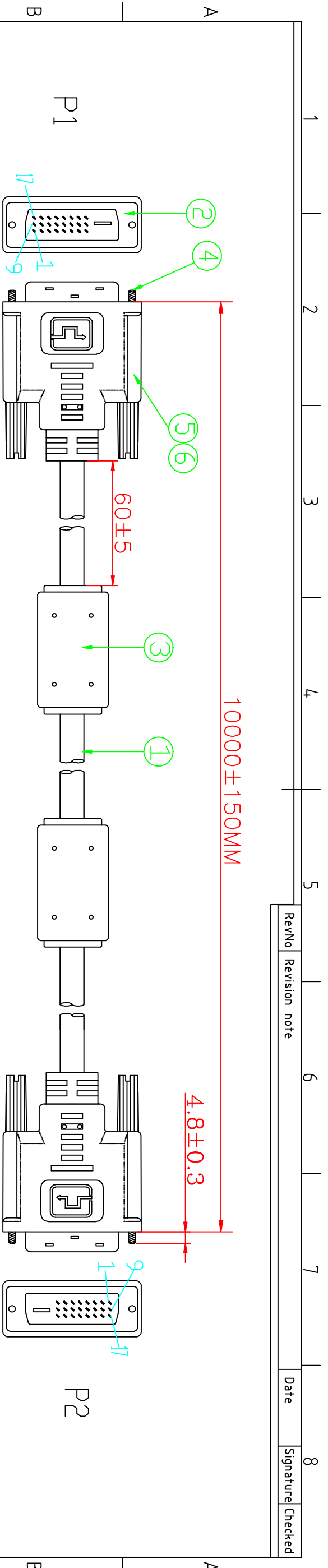
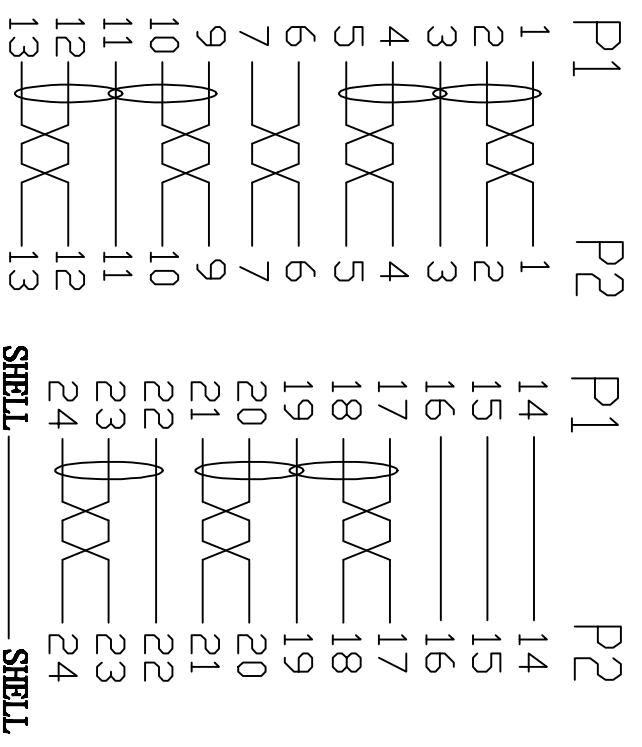


RevNo	Revision note	Date	Signature/Checked
-------	---------------	------	-------------------



PIN OUT



REQUIREMENTS:

- 1:100% short,open and miss wire test.
- 2:Insulation resistance:DC300V 10MΩ(Min)
Conduction resistance 5Ω(Max)

⑥	OUTER MOLDED	BLACK 45P PVC	0.048	KG
⑤	INTER MOLDED	LDPE	0.021	KG
④	SCREW	#4-40UNC 2.3*45.5MM,BLACK PVC	4	PCS
③	FERRITE CORE	F5B:RH14.2*28.5*9.5	2	PCS
②	CONNECTOR	DVI 24+1/MALE,BLACK INSULATOR,GOLD PLATED SHELL,GOLD PLATED PIN	2	PCS
①	CABLE	(1P*28#+FME+D+AL+MYLAR)*7C+1P*28#+3C*28#+ADB JACKET: BLACK PVC OD:8.3±0.15MM	10000	MM
NO.	MATERIAL	DESCRIPTIONG	QTY.	UNIT

LItemref	Quantity	Title/Name,designation,material,dimension etc		Article No./Reference
Designed by	Checked by	HELEN	Approved by - date	File name
ACHY	HELEN	MARCH 6 2012	DVI24+1 M/M 10M	MARCH 6 2012
ANGLE:		DVI 24+1 M-M 28AWG		Scale
UNIT:MM		32 2803		FREE

